

ZEMS Lodge

Morzine | Sleeps 8 + 6 people in four en suite bedrooms
and two 3 person bunk rooms



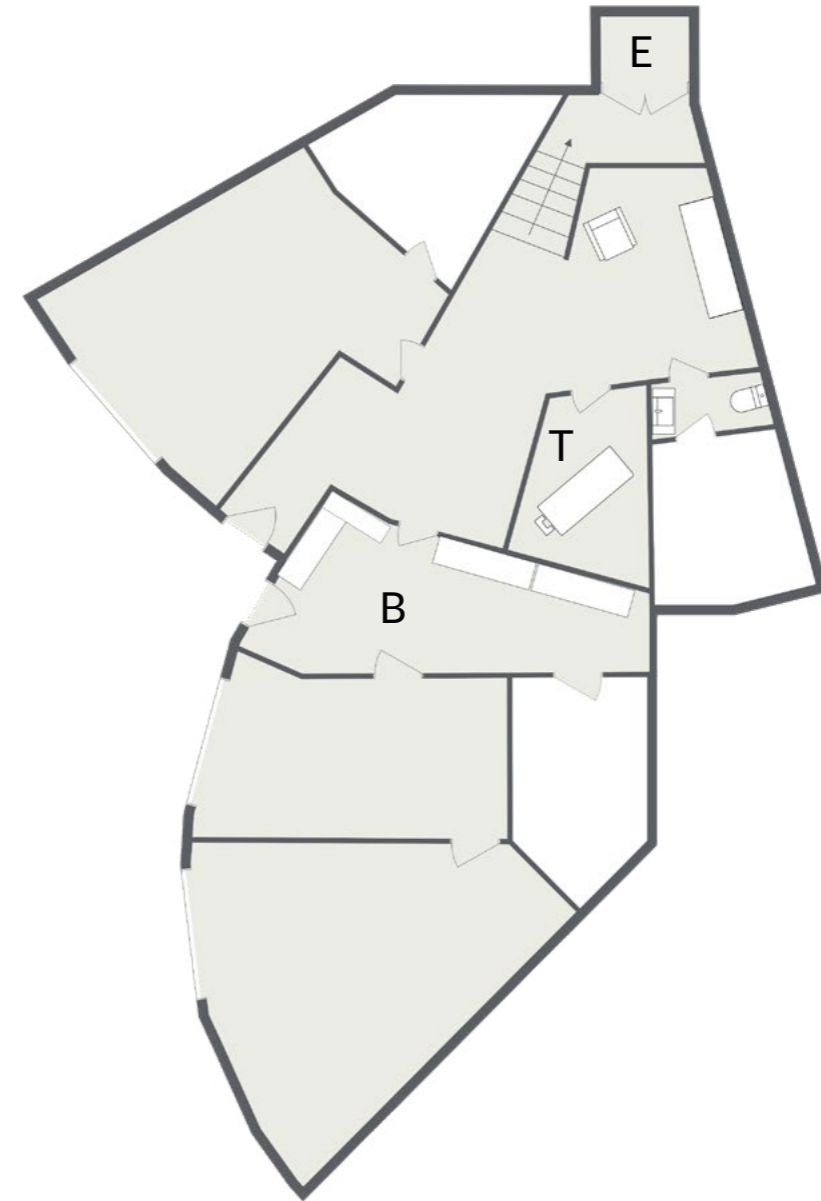
Fact Sheet

SURFACE AREA	530m ²
BEDROOMS	Four en suite bedrooms and two 3 person bunk rooms
NORMAL CAPACITY	Sleeps 8 + 6 people in four en suite bedrooms and two 3 person bunk rooms
SPA & WELLNESS	Relaxation area with multiple loungers leading to a large terrace Walk-in shower Plunge pool with various massage jets and waterfall cascade Glass-fronted sauna with views over Morzine Dedicated massage treatment room
BAR	Mezzanine bar/games room with pool table, TV and musical instruments Three separate temperature-controlled wine fridges
CINEMA ROOM	Cinema room with large projector screen, surround sound, Apple TV and Chromecast
AUDIO-VISUAL	Multiple TVs in main bar/entertainment area with smart apps and French satellite TV Multi-room audio featuring Bang & Olufsen BeoSound and Bower & Wilkins speakers in following zones: bar, lounge, dining area, kitchen, spa and terrace
EXTRAS	Boot and glove dryers Lift (some step access still required) Hairdryers and safes in all bedrooms
KITCHEN	Two ovens, steam oven, microwave, induction hob, espresso machine and Nespresso
TIME TO SKIING	5 minute walk across footbridge to Super Morzine lift
TIME TO RESORT CENTRE	5 minute walk across footbridge
NEAREST AIRPORT	Geneva
TRANSFER TIME	1hr 20mins

FLOOR PLANS

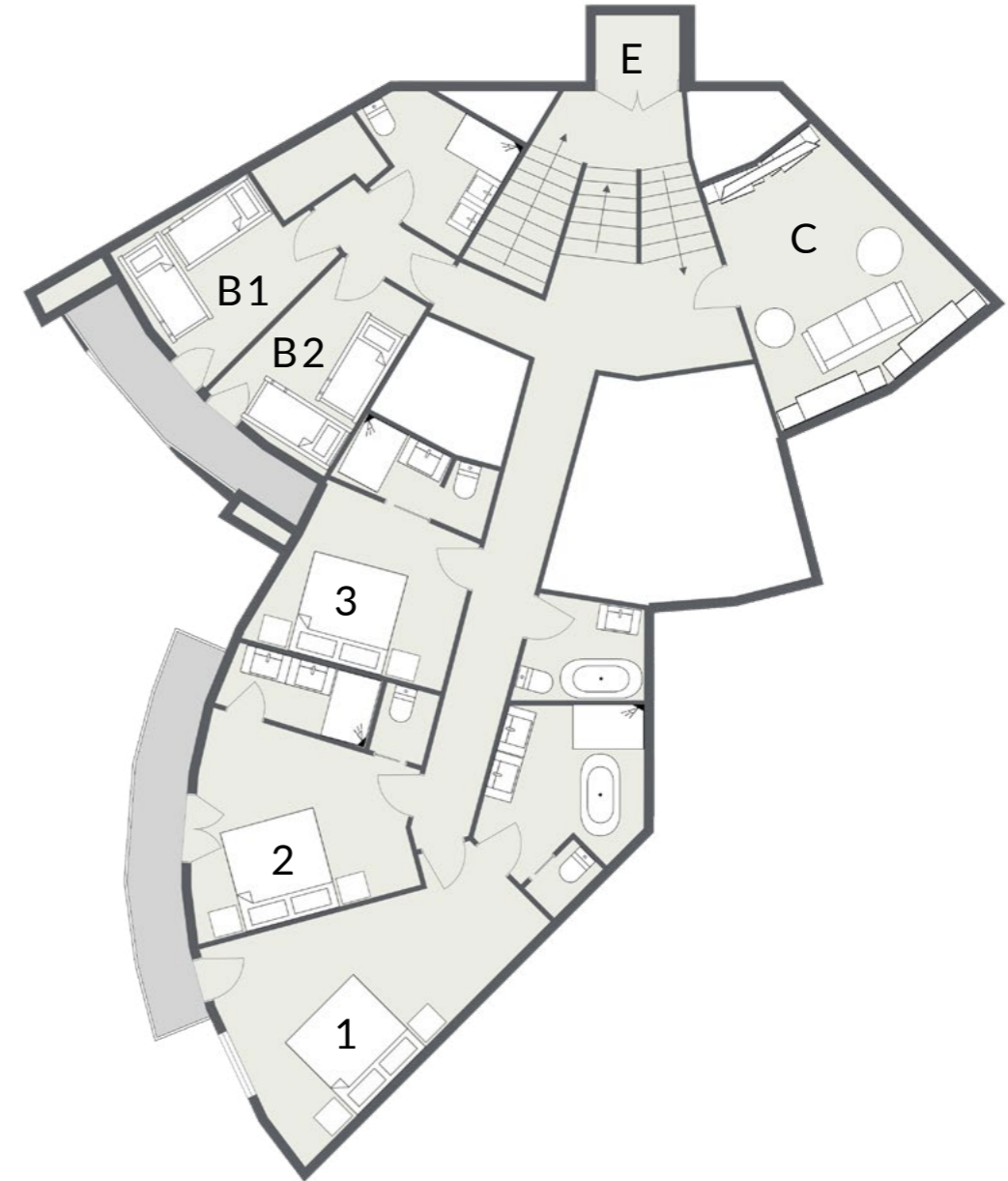
Ground Floor

- Entrance
- Boot room with boot warmers (B)
- Massage treatment room (T)
- Elevator (E)



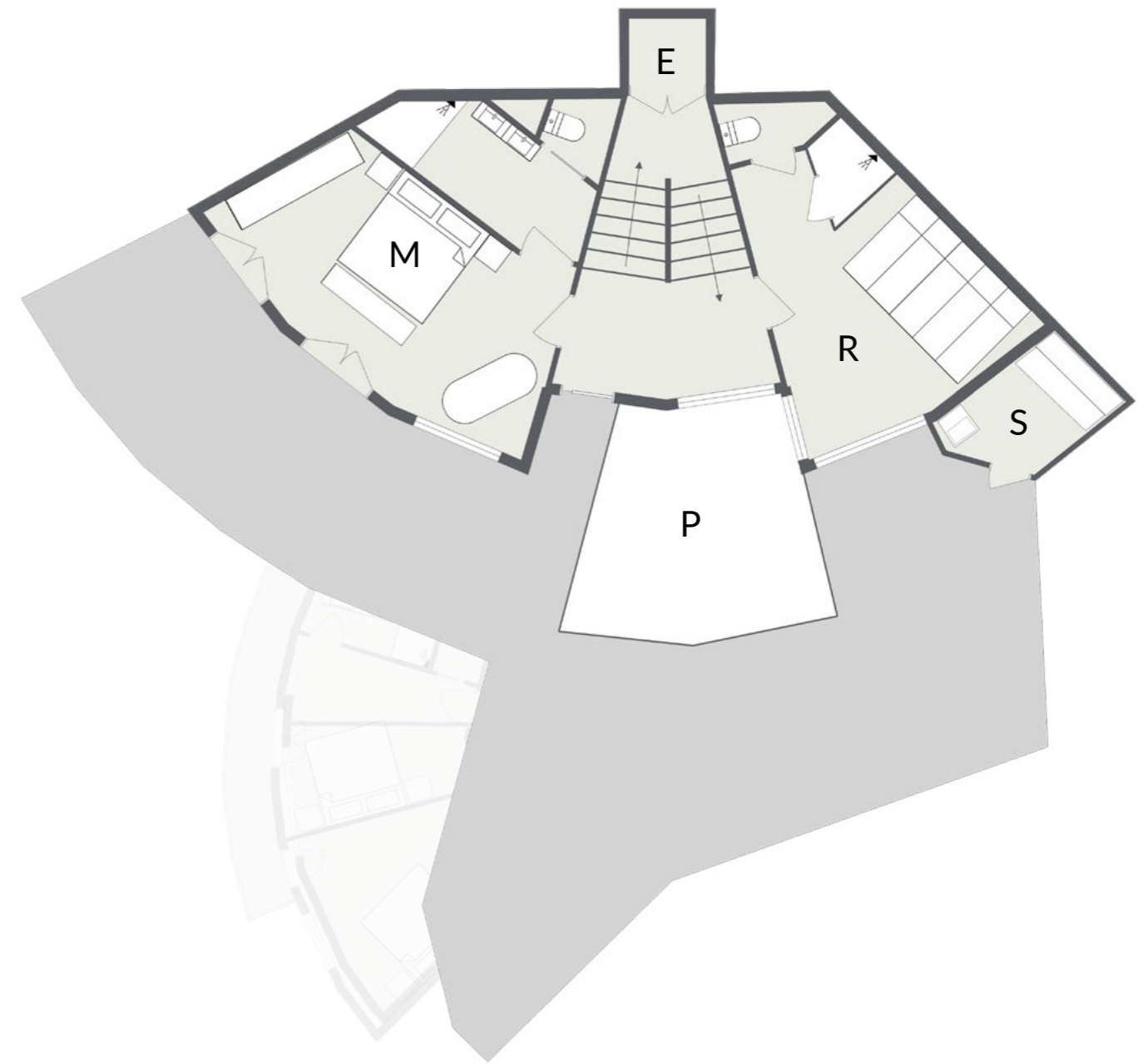
First Floor

- Elevator (E)
- Cinema room with projector (C)
- Bedroom 1 – Super King/twin bedroom with en suite bathroom (1)
- Bedroom 2 – Super King/twin bedroom with en suite shower room (2)
- Bedroom 3 – King bedroom with en suite shower room (3)
- Bunk room 1 – sleeps 3 (B1)
- Bunk room 2 – sleeps 3 (B2)



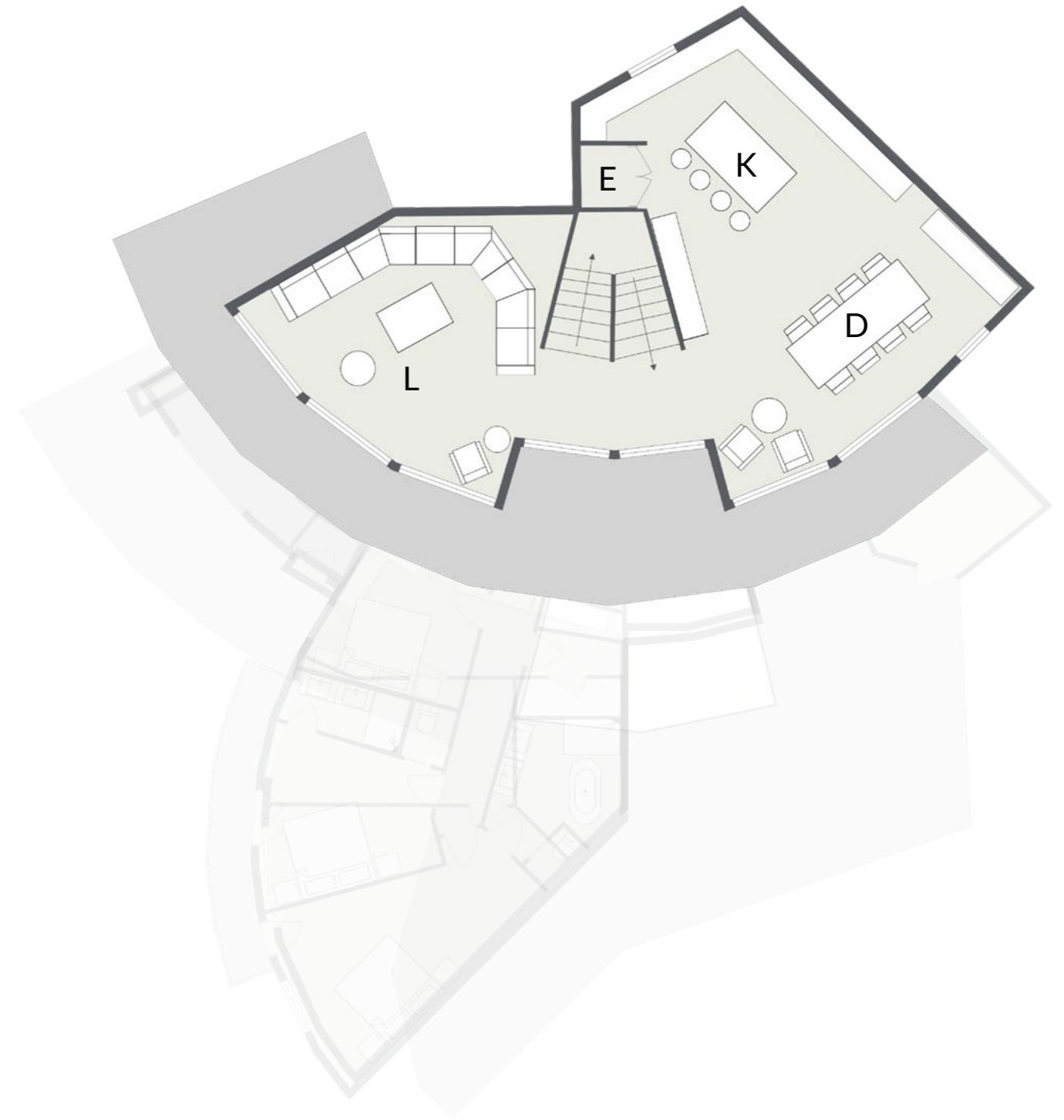
Second Floor

- Elevator (E)
- Master bedroom – Super King/twin bedroom with freestanding bath and en suite shower room (M)
- Glass-fronted sauna (S)
- Relaxation room with comfy loungers, fibre-optic lighting and large designer shower and WC (R)
- Huge south-facing terrace
- Pool (P)



Third Floor

- Elevator (E)
- Lounge (L)
- Kitchen (K)
- Dining area (D)
- Large south-facing balcony with Shep & Kyles' signature swings



Fourth Floor

- Bar area with large TV, wine/beer fridges, pool table and a selection of musical instruments (B)
- Children's TV snug with bean bag seating (TV)

