

THE BOUTIQUE CHALET COMPANY

presents

Goldilocks

Morzine | Sleeps 10 + 2 people in four en suite bedrooms and a bunk room





THE BOUTIQUE CHALET COMPANY

31 Bathwick Street, Bath BA2 6NZ

Tel: +44 (0)20 3588 6001

info@theboutiquechalet.com

 theboutiquechalet

 facebook.com/boutiquechalet

THE BOUTIQUE CHALET COMPANY
presents

Goldilocks

CONTENTS



The Story	4
The perfect location for a luxury ski holiday	

Virtual Tour	6
All the facilities of a luxury ski chalet, yet all the convenience of a fantastic ski apartment	

Fact Sheet	10
Goldilocks at a glance	

Floor Plans	12
--------------------	-----------

Your Stay	22
The Boutique experience	

Bamford Spa	24
--------------------	-----------

The Resort	26
An insider's guide to Morzine	

Our Story	30
We are often asked where it all started and our answer usually surprises people	

With arguably the best views in town and all the luxury features you could ever wish for, Chalet Goldilocks is a truly exciting new addition to our portfolio. While such an enviable location usually comes with a heavy toll on already tired legs, Goldilocks is just a 10-minute walk from the centre of town and the Super Morzine lift, whisking you up to the snow-sure pistes of Avoriaz in no time at all.

The owners of Goldilocks spent months looking at property in Morzine but couldn't find anything that ticked all the boxes. They knew exactly what they wanted – sunshine, glorious views and walking distance to town – but they simply couldn't find it. They returned home disheartened and then by pure chance were offered a plot of land right next to where they had stayed for many years previously. Fast forward three years and Goldilocks (and her smaller sister Three Bears) opened their doors to guests for the first time.

On entering the chalet and walking past the boot room, you can take the elevator up to the first floor for the fully-equipped gym, or continue to the second floor and into the heart of the chalet. The huge state-of-the-art cinema room comfortably seats 12 and features a cocktail bar across the back wall, with extra seating in the form of bar stools. On the same floor you will find a large bunk room that sleeps four, complete with an en suite bathroom. The four en suite double bedrooms on the next floor all feature balconies for when you want to enjoy the spectacular views in private.

The top floor comprises the open-plan kitchen/dining area, with steps leading up to a large mezzanine lounge with comfortable seating, a large screen TV and log fire. Floor-to-ceiling windows make the most of views across town to the mountains beyond and the slopes of the Pleney. A large wrap around balcony with a dining table and plenty of comfy seating is perfect for a spot of al fresco dining in the summer, or for enjoying a few apres ski drinks and watching the sunset. The landscaped garden area out the back of the chalet is the perfect place to relax after a day on the slopes, with a large hot tub, barrel sauna and fire pit to enjoy.

Everything is finished to the high specifications you would expect from a modern, luxury chalet, and there are abundant details and finishing touches that reflect the discerning eye of the owners.

Goldilocks is the perfect base to enjoy everything that Morzine and the larger Portes du Soleil have to offer. We are sure it will be incredibly popular with our guests all-year-round and for many years to come. Goldilocks is perfect rented on it's own for groups of up to 12 people, or in connection with Three Bears where you have a combined capacity of up to 20 people.





VIRTUAL TOUR

The Cinema Room

We are huge fans of cinema rooms in luxury ski chalets and the one in Goldilocks certainly does not disappoint. This is so much more than just a massive TV in a darkened room – this is a proper cinema room with plenty of comfy seating and incredible surround sound, topped off with a huge cocktail bar across the back wall. Mix up a couple of Manhattans, relax and enjoy the latest Hollywood blockbuster in true style. Or grab a cuppa, snuggle up and binge on your favourite Netflix show. For those nights when you are just too tired to drag yourself off to the hot tub.

Spectacular Views

Located a little way up the hill beneath the gondolas of the Super Morzine lift, Goldilocks has arguably the best views in town. Relax on the large south-facing terrace and enjoy a drink while watching the sun set as the last skiers make their way down the Pleney. Sure, the skiing part was great fun but isn't this what it's all really about?



Open Plan Living

The large kitchen/diner and living room are split across two levels on the top floor of the chalet. The floor-to-ceiling windows offer uninterrupted views right across town to the mountains beyond. How could you ever tire of looking at that?



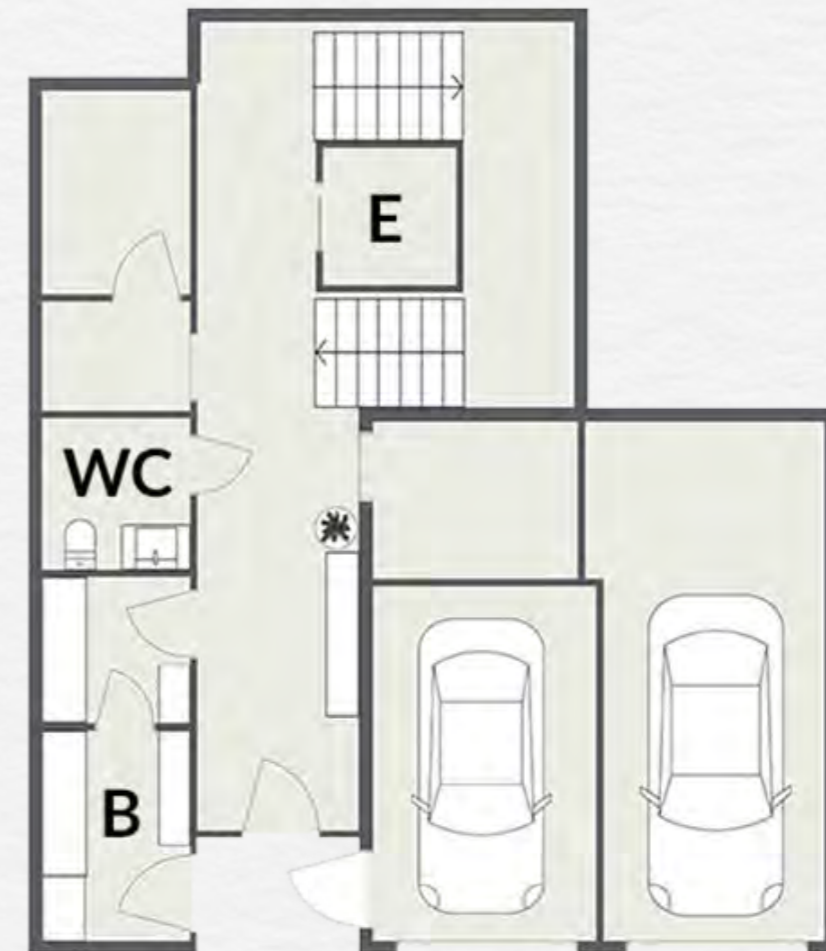
Goldilocks

SURFACE AREA	250m ²
BEDROOMS	5 en suite bedrooms, comprised of 4 Super Kings and a bunk room that can comfortably sleep 4 adults
NORMAL CAPACITY	12 guests
SPA & WELLNESS	Landscaped garden with barrel sauna, large hot tub and fire pit
AUDIO-VISUAL	Large cinema room with plenty of comfortable seating and a fully-stocked bar
EXTRAS	Outdoor dining area 2 garages plus extra parking on drive Ski room with boot warmers
KITCHEN	Large designer kitchen, fully-equipped for catering, with breakfast bar
TIME TO SKIING	10 minute walk across footbridge to Super Morzine lift
TIME TO RESORT CENTRE	10 mins walk
NEAREST AIRPORT	Geneva
TRANSFER TIME	1hr 20mins



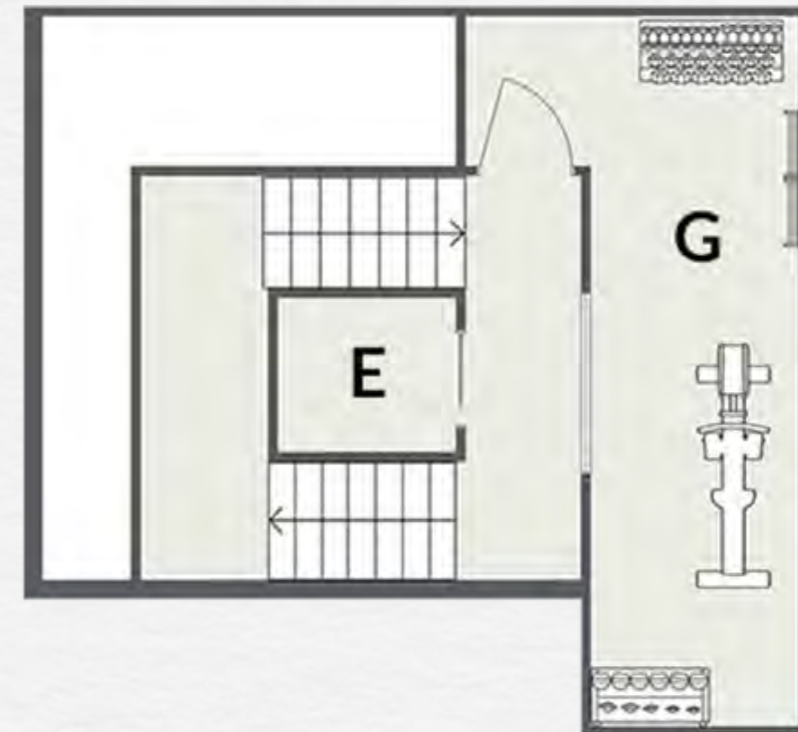
Ground Floor

- Ski room with boot warmers (B)
- Elevator (E)



Upper Ground Floor

- Gym (G)
- Elevator (E)



First Floor

- Cinema room (C)
- En suite bunk room, sleeping 4 (B)
- Elevator (E)



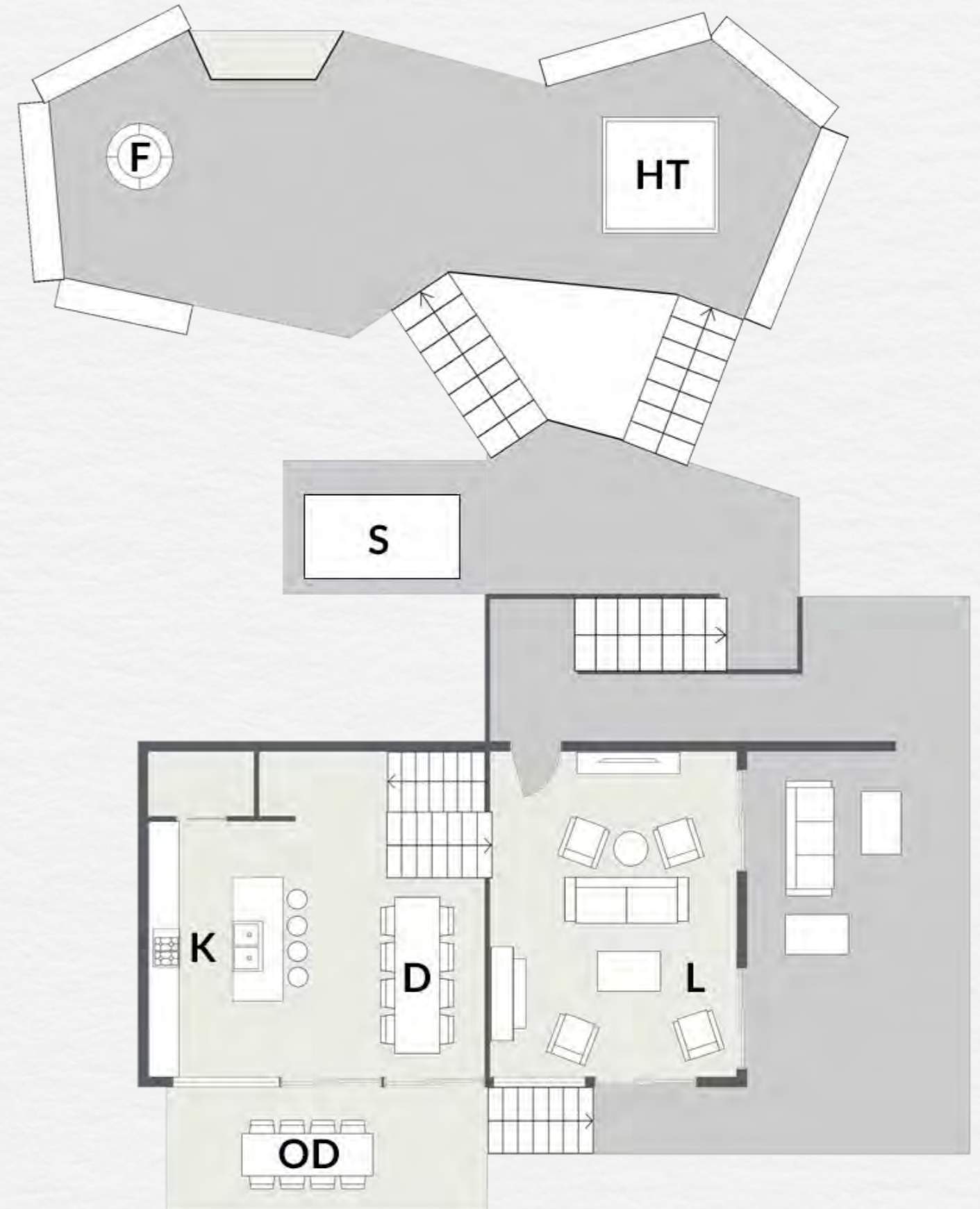
Second Floor

- Bedroom 1 with super king-sized bed and en suite bathroom and shared balcony
- Bedroom 2 with super king-sized bed and en suite shower room and shared balcony
- Master bedroom with super king-sized bed and en suite bathroom (3) and large private balcony
- Bedroom 4 with super king-sized bed and en suite shower room and private balcony



Third Floor

- Open plan kitchen (K)
- Dining table seating 10 (D)
- Outdoor dining area (OD)
- Lounge with TV and spectacular mountain views (L)
- Landscaped garden with hot tub (HT) and fire pit (F)
- Barrel sauna (S)



Luxury Self-Catered

Introducing Luxury Self-Catered from The Boutique Chalet Company – immaculately presented chalets with bespoke service from the moment you book and throughout your stay. Our dedicated Travel Experience Team will meticulously plan your personal itinerary, introducing you to trusted partners who we have been working with for more than a decade in the mountains.

On arriving at your property you'll be met by one of our chalet managers – they'll ensure you know how the chalet works, that you've got everything you need and where you're heading out to ski the next day. Our friends at Gravier Ski take on a dedicated technician to specifically work with our guests – they will come and get you kitted out directly in your chalet and we can also deliver lift passes so you don't have to queue in the morning.

You won't need to shop... each day we will deliver a bespoke hamper in which you can choose to include breakfast supplies, drinks packages and even recipe boxes that make evening catering a breeze. If you want to eat out, be that on or off the mountain, we'll help you make reservations at the best restaurants – we'll even share our personal recommendations for what to order and which table to request.

All our properties are in amazing locations and they're at most a few hundred metres from the lifts or a bus stop – we'll help you make a plan for exactly how to get around, we can even arrange lockers at the lift so you don't need to walk in your ski boots. If you're driving out to resort or hiring a car at the airport, we can give you tips on where to park and how to get around easily.

To make your stay really special you can also benefit from our exclusive spa partnership with Bamford – our in-house therapists offer a full treatment menu in our properties. For those special occasions we can also arrange live bands, firework displays and bespoke events.



A woman with dark hair pulled back is lying on her stomach on a massage table. Her eyes are closed, and she has a serene expression. A therapist's hands are visible, gently massaging her back. The background is softly blurred, showing a bright, airy spa environment.

bamford

Our partnership with Bamford is one born out of shared values and beliefs. It's a collaboration that we are very proud of.

Bamford is about the simple pleasure of quality. Since 2006, this philosophy has created the purest body care and spa range using only organic and botanical ingredients. Bamford are committed to making truly natural products using the best artisans from around the world. Bamford is authentic luxury—serene, timeless and pure.

Bamford's organic and botanical facials and body massage treatments are individually crafted and deliver a truly relaxing experience in order to unwind after a day in the mountains.

You can find the full range of treatments in our [Bamford Treatment Menu](#). Call our concierge team on +44 (0)20 3588 6002 to book an in-chalet treatment from one of our Bamford-trained therapists.

Welcome To Morzine



Morzine. The heart of the Portes du Soleil. A beautiful village where skiing has been part of winter life since the lifts first opened in 1934. Whilst traditionally it may not have been a destination for those seeking the finest the luxury ski world can offer, things are changing fast. The village has always been as picturesque as the ski area is diverse, and over the last five years a wave of young independent creatives from across Europe have set up new restaurants, bars and boutiques that wouldn't look out of place in any major city in the world. This is quite simply a resort on the move.

The Morzine ski experience is limitless and should not be underestimated. In part because it forms part of the Portes du Soleil, spanning two countries and 12 different interconnected ski resorts, which is a great deal to ski on any one week ski holiday. But also because each skiing district has its own secret offerings, whether it be quiet slopes during peak weeks for relaxed family skiing or hidden locations that offer powder runs days after the rest of the resort has been tracked.

It is easy to forget in the midst of a ski holiday that there are other equally exciting things to experience. In reality, such is the plethora of non-ski activities, they warrant an action-packed week's holiday of their own. Morzine village offers a wealth of such experiences that happen well away from the slopes. From snowshoeing to hidden restaurants away from the crowds to parapenting with or without skis, there is so much to do here...

If you already know Morzine in the winter then it will be yours to rediscover in the summer and your love affair may even fall for the warmer season as summer opens up, not just the mountain, but the entire region. The natural beauty is astounding, as are the gifts the mountain gives you in the form of waves of colourful flowers to marvel at, cool freshwater lakes to swim in and weather to warm your soul.

When you're not out exploring the vast playground that is the Portes du Soleil we know that being back home at Goldilocks certainly won't disappoint.

The Ski Area

The unique selling point of the Portes du Soleil is the on-snow experience. Pistes of every orientation from high altitude powder bowls to beautiful winding tree-lined runs into the picture postcard villages. Not to mention the limitless off-piste. There's something for every ability from those learning for the very first time, through to the seasoned skier looking for the ultimate challenge. No two days are the same here, in fact, no two weeks are!

THE DISTRICTS:

- Morzine-Pleney
- Morzine-Les Gets
- Nyon
- Super Morzine
- Avoriaz
- The Swiss Resorts & the Portes du Soleil
- The Stash for freestyle



We founded The Boutique Chalet Company in 2011 with a clear vision to redefine mountain luxury and deliver a contemporary version of the traditional luxury chalet holiday. Today that vision is stronger than ever. It's all that is good about our industry's history, seamlessly blended with inspiration from exotic destinations and major cities around the world today.

We are often asked where it all started and our answer usually surprises people. They expect to hear of a long time love affair with the snow and skiing, but for us it's all about the properties and the service. We love the mountains for sure, but none of us are die hard skiers and that's a good thing. Our real passion lies in the amazing, world-class properties which we not only operate but are privileged to have helped design and build, alongside all aspects of food and drink. Nowadays it's that last bit, exceptional, innovative and unique dining and drinks experiences, that we think really sets us apart from our competitors.

Our journey started with the development of a luxury ski chalet. The property was completely redeveloped in two phases spanning several years in total and is virtually unrecognisable now to where it started. Since then we have further strengthened our collaborations with leading architects such as Marullaz and blank interior designers Shep & Kyles with whom we have worked on Sapphire. With one of our properties winning Best New Ski Chalet at the 2016 World Ski Awards, two more receiving nominations in 2017 and another shortlisted for an

International Design & Architecture Award in 2018, it is clear that truly spectacular properties are our bread and butter.

What drives us every day is a passion to be creative and innovative in all that we do and particularly our food and drink. We genuinely aim to take the best elements of service and hospitality that we experience and incorporate those into our own style, to deliver what we believe is the most innovative ski chalet experience out there.

As individuals, we live for those magical moments, the memories that inspire you and fill you with that warm glow of knowing... where you prepare yourself with the sentiment that "this is going to be good." For example, we will never forget ordering a beer at the NoMad hotel in New York City, and being handed a menu with such an extensive array of craft beers—literally hundreds—from around the world.

More recently we were blown away by the cocktails at The Cocktail Trading Co. in Shoreditch, London. We've been to many great cocktail bars over the years, but these took it to another level. It's



experiences like these that fuel our own products; so in this area we have the Four Bottles Bar which showcases our wines, craft beers, gins and our very own BC Signature cocktail.

When it comes to food our travels and experiences are equally important. We only employ experienced professional chefs in our kitchens and whilst we encourage them to engage with their guests to deliver a personalised dining experience, we have also developed a range of signature dining concepts, which mean their guests enjoy truly special and unique experiences every time they dine. All our chefs are trained in these menus, adding to their own experience to create something truly special.

Kaiseki—our fine dining Japanese tasting menu—is the perfect example. Curated from the ground up for service in our chalets, this isn't simply a good chef turning their hand to a new cuisine. This is your own Japanese Fusion Restaurant in the comfort of your chalet.

Kaiseki was so successful that we wanted to take the 'restaurant experiences' concept further. In fact

you could argue it started with The Breakfast Club, a menu that is a far cry from just bacon and eggs. It showcases a range of signature daily dishes designed by our head chef, Nick Lyon-Dean, and inspired by Brunch Classics—perfect to set you up for a day on the slopes, without weighing you down!

Fantastic spa facilities feature throughout our portfolio, so working with the right spa partner was essential. Enter Bamford. Our partnership runs beyond simply using their luxurious botanic and organic products throughout our properties.



We also offer their massage and beauty treatments in our chalets' very own Bamford Spas. Our therapists train alongside theirs at The Haybarn Spa in the Cotswolds, a statement that only a select few five star hotels can make.

Tying together these elements is of course our service. We'd like to think of it as modern, professional but also relaxed in style. Even small details set the tone here, such as our uniforms which take their inspiration from the bold and ambitious Manchester House restaurant. We want you to feel perfectly at home in your chalet—our team are there when you need them, but not when you don't—and we try not to do things for the sake of it... tricks aren't required to make our holidays special.

We would say that simple quality is the goal we strive for, but as with all things simple, it's the detail that counts. The refinement of this detail year on year is the reason our food and drinks experiences are

considered the best in the industry! World-class properties, curated dining experiences, exceptional levels of service with fine attention to detail and a personal touch throughout. Offering a five-star luxury hotel experience in a private mountain residence.

This is our story.

This is Mountain Luxury Redefined.

So would you like to join us?



The faces behind our story
(clockwise from top left)

- Chris Hamblin, Managing Director
- Sarah Hamblin, Sales & Marketing Director
- Nick Lyon-Dean, Head Chef
- Lucy Ford, Travel Experience Manager
- Paul Farley, Sales Manager
- Alex Spooner, Operations Manager



THE BOUTIQUE CHALET COMPANY

31 Bathwick Street, Bath BA2 6NZ

Tel: +44 (0)20 3588 6001

info@theboutiquechalet.com