

THE BOUTIQUE CHALET COMPANY

presents

Chalet Bisou

Morzine | Sleeps 14





THE BOUTIQUE CHALET COMPANY

11 Beauford Square, Bath BA1 1HJ

Tel: +44 (0)20 3588 6001

info@theboutiquechalet.com

 [theboutiquechalet](https://www.instagram.com/theboutiquechalet)

 [facebook.com/boutiquechalet](https://www.facebook.com/boutiquechalet)

THE BOUTIQUE CHALET COMPANY
presents

Chalet Bisou



CONTENTS

The Story Ultra-luxury living in the Portes du Soleil	6
Virtual Tour	10
Fact Sheet Chalet Bisou at a glance	22
Floor Plans Luxurious accommodation for up to 14 guests	24
Your Stay The Boutique Experience	32
Bamford Spa Your private wellness suite	34
The Resort An insider's guide to Morzine	40
Our Story We are often asked where it all started and our answer usually surprises people	44

“A bold, concrete-forward masterpiece that trades rustic sentimentality for mid-century Italian sophistication.”

In a world of reclaimed timber and rustic slate, Chalet Bisou is a radical departure. While most luxury chalets follow a predictable script of traditional alpine aesthetics, this residence was born from a much bolder ambition: to create a sanctuary defined by light, lateral volume, and raw structural beauty.

To achieve this, the owners secured three adjacent plots—not to maximize the footprint, but to allow for a more thoughtful, sprawling design. By prioritizing horizontal space over vertical density, local architect Christophe Bondaz crafted a dwelling that doesn't just dominate the mountainside, but breathes within the landscape.

The signature of Chalet Bisou is its unapologetic use of exposed architectural concrete. Far from being cold or industrial, the material serves as a textured, honest canvas for the light that floods the interior from all four sides. The heart of the home is the main living space, which offers a volume that immediately commands attention. This monumental room is framed by sweeping, 360-degree views that encompass the town below and the jagged peaks beyond. The interior design is a sophisticated nod to Mid-Century Italian modernism, featuring statement pieces specifically selected to complement the chalet's grand proportions and architectural gravity.

Despite its vast scale, the chalet is meticulously designed for moments of intimacy. The lateral layout creates natural pockets of relaxation, allowing guests to find quietude without ever feeling disconnected from the alpine environment. Each of the seven bedroom suites offers the understated glamour of a high-end boutique hotel, where the raw texture of the concrete walls is softened by the tactile luxury of rich, deep-pile carpets and bespoke textiles. Even the concrete ceilings are infused with a surprising warmth, proving that avant-garde design can be remarkably inviting when executed with this level of precision.

The wellness floor serves as the chalet's ultimate showpiece, anchored by a 15-metre swimming pool designed for genuine athletic use rather than just leisure. Massive sliding glass walls allow the boundary between the heated interior and the crisp mountain air to vanish, creating a seamless indoor/



outdoor experience regardless of the season. This sanctuary is completed by a suite of spa facilities, including a dual-purpose sauna and steam room, a professional-grade gym, and a treatment room. For evening entertainment, the tiered cinema provides total immersion, featuring deep-set sofas and a high-specification surround sound system.

Ultimately, Christophe Bondaz's vision was not to create a singular, heavy mass, but a pair of buildings that sit softly on the landscape. From a distance, the structure reveals little of its internal scale, respecting the natural contours of the mountain. It is only once inside that the full extent of the vision is realised: a masterclass in modern architecture that trades the "chocolate box" cliché for a bold, enduring connection to nature.



The Wellness Sanctuary

Beyond the standard alpine spa, the wellness level at Chalet Bisou is anchored by a 15-meter swimming pool—a substantial length designed for genuine athletic recovery as much as relaxation. The space is defined by its blurring of boundaries; massive glass walls slide entirely away, allowing you to swim from the heated interior directly into the crisp mountain air. This sanctuary is further enhanced by a professional-grade gym, a dedicated treatment room, and a dual-purpose sauna and steam room.



The Panoramic Perspective

Occupying a rare, sun-drenched elevation on Morzine's southern slope, Chalet Bisou serves as a private amphitheater for the surrounding Alps. The architectural decision to include floor-to-ceiling windows on all four sides of the living space creates a "living gallery" effect, where the landscape becomes an integral part of the interior design. From the first light of dawn hitting the Nyon peak to the evening glow of the town far below, the 360-degree views offer a constant, sweeping connection to the Portes du Soleil. It is a vantage point that ensures you are always immersed in the mountain's theatre, even from the warmth of the fireside.



The Architectural Narrative

The true soul of Chalet Bisou lies in its defiance of alpine clichés. By securing three adjacent plots, the owners allowed architect Christophe Bondaz the freedom to design a residence that prioritizes lateral volume over vertical density. The result is a bold, concrete-forward masterpiece that trades rustic sentimentality for mid-century Italian sophistication. This intentional use of space creates a sense of “breathing room” rarely found in the mountains, where raw structural textures meet high-thread-count luxury. It is more than just a place to stay; it is a profound architectural statement that redefines what a luxury ski retreat can be.









FACT SHEET

Chalet Bisou

SURFACE AREA	1,000m ² (approx)
BEDROOMS	7 bedrooms, all en suite
NORMAL CAPACITY	14 guests
SPA & WELLNESS	Hamman Sauna Outdoor hot tub Heated 15m swimming pool
GYM	Fully-equipped gym
CINEMA/TV ROOM	Cinema room with large screen, surround sound and terraced seating
TIME TO SKIING	5 mins drive to Pleney (Morzine-Les Gets) or Prodains (Avoriaz)
TIME TO RESORT CENTRE	20 mins walk or 5 mins drive
NEAREST AIRPORT	Geneva
TRANSFER TIME	1hr 20mins



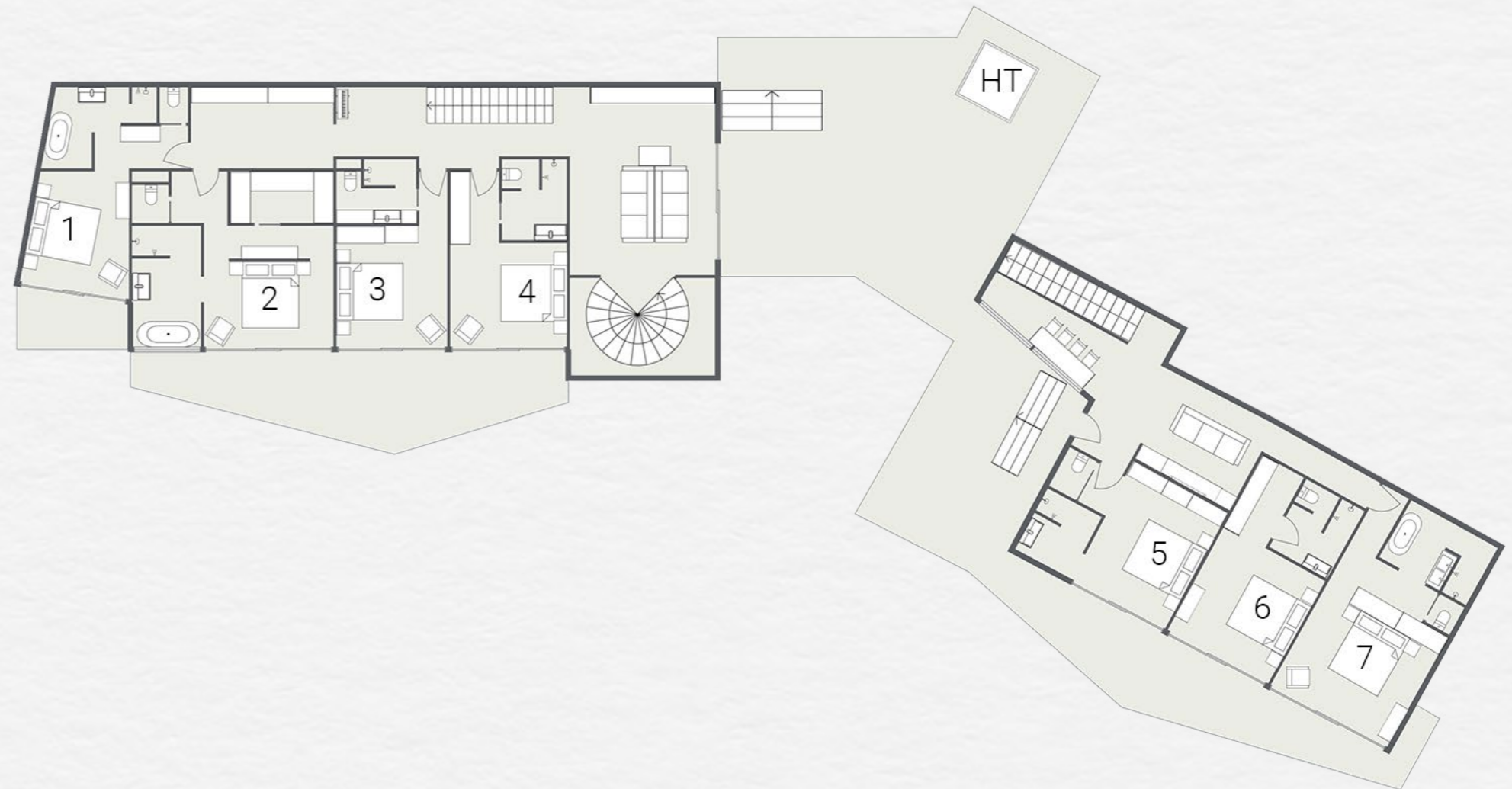
Floor 4

- Kitchen (K)
- Dining table for 14 people (D)
- Lounge area with fireplace and TV (L)
- Terrace (T)



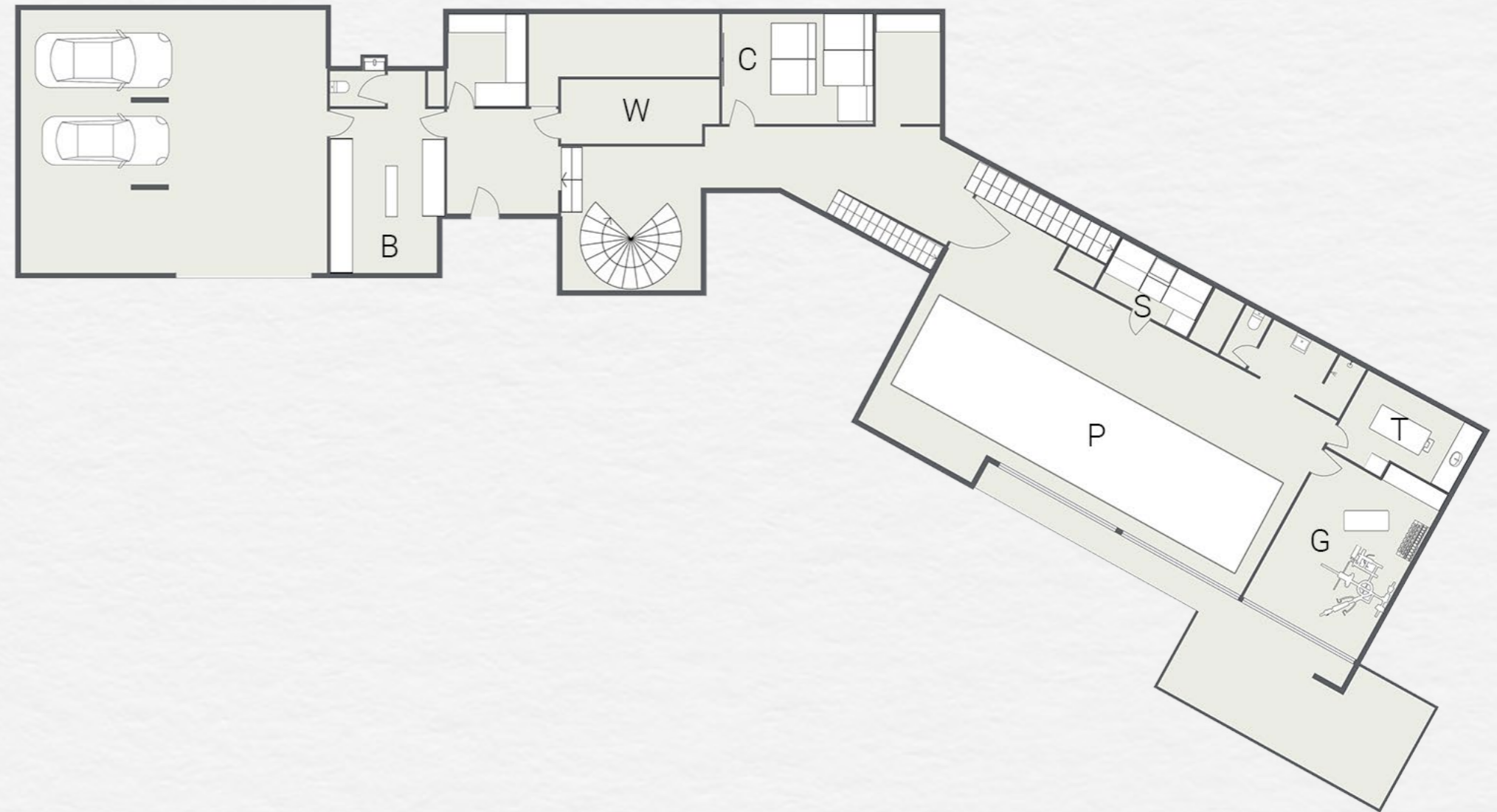
Floor 3

- Bedroom 1 – King size/twin bed, en suite bath/shower room with twin basins
- Bedroom 2 – King size/twin bed, en suite bath/shower room with twin basins
- Bedroom 3 – King size/twin bed, en suite shower room
- Bedroom 4 – King size/twin bed, en suite shower room
- Bedroom 5 – King size/twin bed, en suite shower room
- Bedroom 6 – King size/twin bed, en suite shower room
- Bedroom 7 – King size/twin bed, en suite bath/shower room with twin basins
- Large terrace with hot tub (HT)



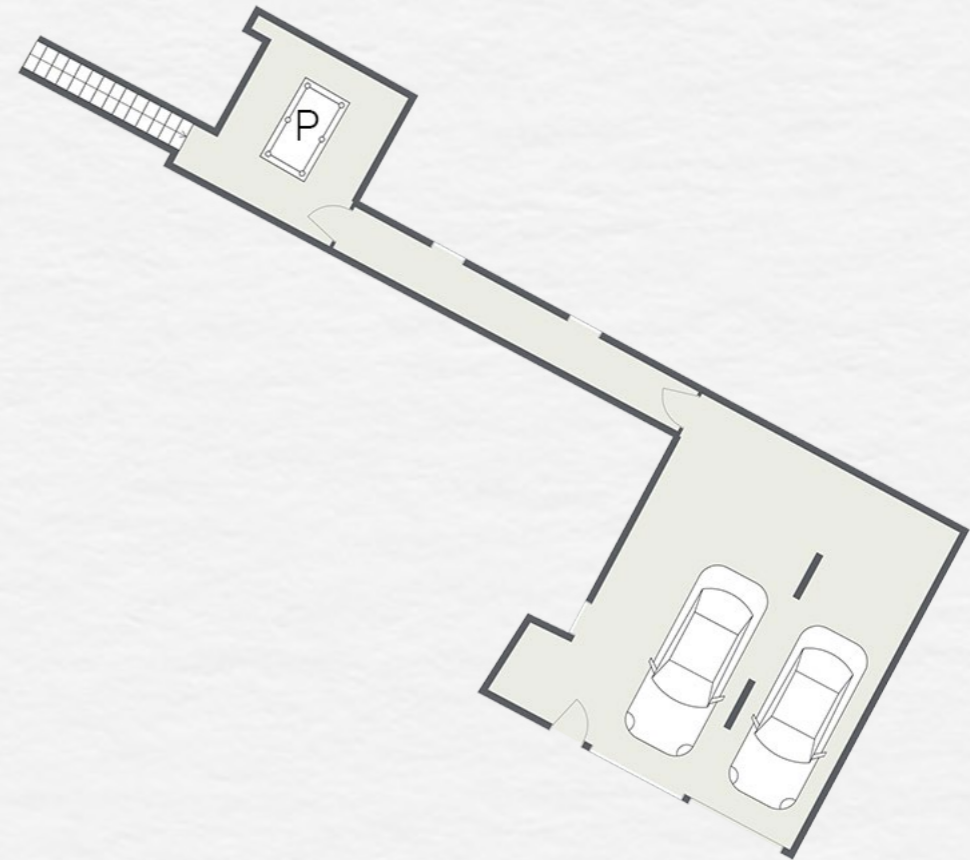
Floor 2

- Wellness suite with 15-metre swimming pool (P), sauna/steam room (S), gym (G) and treatment room (T)
- Wine cellar (W)
- Cinema room (C)
- Boot room (B)
- Parking garage



Floor 1

- Billiards/pool table (P)
- Parking garage



The Boutique Experience

As part of our Exclusive Collection, Chalet Bisou sits amongst some of the finest properties found anywhere in the Alps. To complement the exceptional quality of accommodation you can expect to be looked after by our most experienced professionals who have previously worked in private households, exclusive hotels and Michelin-starred restaurants.

Champagne corks pop on your arrival, with a welcome reception and an introduction to your chalet team who include a Chalet Manager, Assistant Manager, Professional Chef, Driver and Housekeeping Team. Following a tour of the fabulous chalet facilities there will be plenty of time to relax and settle into your room. Sumptuous beds, Egyptian cotton linen and indulgent organic and botanical bathroom products from Bamford are our standard.

When you emerge, rejuvenated, from your room and head for the dining table, our luxurious catered package is one of the most innovative in the industry. Guests can enjoy our signature dining concepts such as Kaiseki – our Japanese multi-course dining experience – and our critically acclaimed Breakfast Club – the finest way to start any day. Drinks are available from our Four Bottles Bar featuring fine wines, craft beers, select gins and spirits and our own cocktail menu.

Each day your driver is available from dawn to dusk to whisk you to and from the ski slopes or the village centre, so there is never a need to walk in ski boots. Our après ski chauffeur service means your comfortable shoes can even be brought to the bottom of the slopes for you!

Chalet Bisou is available on a fully-catered basis, for exclusive use of the whole property.



A woman with dark hair pulled back is lying on her stomach on a massage table, eyes closed in a state of relaxation. A therapist's hands are visible, performing a massage on her back. The background is softly blurred, showing a white towel and a bright, airy environment.

bamford

Our partnership with Bamford is one born out of shared values and beliefs. It's a collaboration that we are very proud of.

Bamford is about the simple pleasure of quality. Since 2006, this philosophy has created the purest body care and spa range using only organic and botanical ingredients. Bamford are committed to making truly natural products using the best artisans from around the world. Bamford is authentic luxury—serene, timeless and pure.

Bamford's organic and botanical facials and body massage treatments are individually crafted and deliver a truly relaxing experience in order to unwind after a day in the mountains.

You can find the full range of treatments in our [Bamford Treatment Menu](#). Call our concierge team on +44 (0)20 3588 6002 to book an in-chalet treatment from one of our Bamford-trained therapists.





Welcome To Morzine



Morzine. The heart of the Portes du Soleil. A beautiful village where skiing has been part of winter life since the lifts first opened in 1934. Whilst traditionally it may not have been a destination for those seeking the finest the luxury ski world can offer, things are changing fast. The village has always been as picturesque as the ski area is diverse, and over the last five years a wave of young independent creatives from across Europe have set up new restaurants, bars and boutiques that wouldn't look out of place in any major city in the world. This is quite simply a resort on the move.

The Morzine ski experience is limitless and should not be underestimated. In part because it forms part of the Portes du Soleil, spanning two countries and 12 different interconnected ski resorts, which is a great deal to ski on any one week ski holiday. But also because each skiing district has its own secret offerings, whether it be quiet slopes during peak weeks for relaxed family skiing or hidden locations that offer powder runs days after the rest of the resort has been tracked.

It is easy to forget in the midst of a ski holiday that there are other equally exciting things to experience. In reality, such is the plethora of non-ski activities, they warrant an action-packed week's holiday of their own. Morzine village offers a wealth of such experiences that happen well away from the slopes. From snowshoeing to hidden restaurants away from the crowds to parapenting with or without skis, there is so much to do here...

If you already know Morzine in the winter then it will be yours to rediscover in the summer and your love affair may even fall for the warmer season as summer opens up, not just the mountain, but the entire region. The natural beauty is astounding, as are the gifts the mountain gives you in the form of waves of colourful flowers to marvel at, cool freshwater lakes to swim in and weather to warm your soul.

When you're not out exploring the vast playground that is the Portes du Soleil we know that being back home at Chalet Bisou certainly won't disappoint.

The Ski Area

The unique selling point of the Portes du Soleil is the on-snow experience. Pistes of every orientation from high altitude powder bowls to beautiful winding tree-lined runs into the picture postcard villages. Not to mention the limitless off-piste. There's something for every ability from those learning for the very first time, through to the seasoned skier looking for the ultimate challenge. No two days are the same here, in fact, no two weeks are!

The Morzine ski experience is limitless and should not be underestimated. In part because it forms part of the Portes du Soleil, spanning two countries and 12 different interconnected ski resorts, which is a great deal to ski on any one week ski holiday. But also because each skiing district has its own secret offerings, whether it be quiet slopes during peak weeks for relaxed family skiing or hidden locations that offer powder runs days after the rest of the resort has been tracked. The mountains truly are what you make them so it pays to be in the know.

MORZINE-AVORIAZ

120 kilometres of pistes
26 chairlifts
3 cable cars
14 drag lifts
3 green pistes
29 blue pistes
28 red pistes
9 black pistes
5 mountain lifts for walkers

THE DISTRICTS

Morzine-Pleney
Morzine-Les Gets
Nyon
Super Morzine
Avoriaz
The Swiss Resorts & the
Portes du Soleil
The Stash for Freestyle

PORTES DU SOLEIL

650 kilometres of pistes
12 resorts in 2 countries
82 chairlifts
3 cable cars
106 drag lifts
37 green pistes
123 blue pistes
110 red pistes
30 black pistes
10 terrain parks



We founded The Boutique Chalet Company in 2011 with a clear vision to redefine mountain luxury and deliver a contemporary version of the traditional luxury chalet holiday. Today that vision is stronger than ever. It's all that is good about our industry's history, seamlessly blended with inspiration from exotic destinations and major cities around the world today.

We are often asked where it all started and our answer usually surprises people. They expect to hear of a long time love affair with the snow and skiing, but for us it's all about the properties and the service. We love the mountains for sure, but none of us are die hard skiers and that's a good thing. Our real passion lies in the amazing, world-class properties which we not only operate but are privileged to have helped design and build, alongside all aspects of food and drink. Nowadays it's that last bit, exceptional, innovative and unique dining and drinks experiences, that we think really sets us apart from our competitors.

Our journey started with the development of a luxury ski chalet. The property was completely redeveloped in two phases spanning several years in total and is virtually unrecognisable now to where it started. Since then we have further strengthened our collaborations with leading architects such as Marullaz and blank interior designers Shep & Kyles with whom we have worked on Sapphire. With one of our properties winning Best New Ski Chalet at the 2016 World Ski Awards, two more receiving nominations in 2017 and another shortlisted for an

International Design & Architecture Award in 2018, it is clear that truly spectacular properties are our bread and butter.

What drives us every day is a passion to be creative and innovative in all that we do and particularly our food and drink. We genuinely aim to take the best elements of service and hospitality that we experience and incorporate those into our own style, to deliver what we believe is the most innovative ski chalet experience out there.

As individuals, we live for those magical moments, the memories that inspire you and fill you with that warm glow of knowing... where you prepare yourself with the sentiment that "this is going to be good." For example, we will never forget ordering a beer at the NoMad hotel in New York City, and being handed a menu with such an extensive array of craft beers—literally hundreds—from around the world.

More recently we were blown away by the cocktails at The Cocktail Trading Co. in Shoreditch, London. We've been to many great cocktail bars over the years, but these took it to another level. It's



experiences like these that fuel our own products; so in this area we have the Four Bottles Bar which showcases our wines, craft beers, gins and our very own BC Signature cocktail.

When it comes to food our travels and experiences are equally important. We only employ experienced professional chefs in our kitchens and whilst we encourage them to engage with their guests to deliver a personalised dining experience, we have also developed a range of signature dining concepts, which mean their guests enjoy truly special and unique experiences every time they dine. All our chefs are trained in these menus, adding to their own experience to create something truly special.

Kaiseki—our fine dining Japanese tasting menu—is the perfect example. Curated from the ground up for service in our chalets, this isn't simply a good chef turning their hand to a new cuisine. This is your own Japanese Fusion Restaurant in the comfort of your chalet.

Kaiseki was so successful that we wanted to take the 'restaurant experiences' concept further. In fact

you could argue it started with The Breakfast Club, a menu that is a far cry from just bacon and eggs. It showcases a range of signature daily dishes designed by our head chef, Nick Lyon-Dean, and inspired by Brunch Classics—perfect to set you up for a day on the slopes, without weighing you down!

Fantastic spa facilities feature throughout our portfolio, so working with the right spa partner was essential. Enter Bamford. Our partnership runs beyond simply using their luxurious botanic and organic products throughout our properties.



We also offer their massage and beauty treatments in our chalets' very own Bamford Spas. Our therapists train alongside theirs at The Haybarn Spa in the Cotswolds, a statement that only a select few five star hotels can make.

Tying together these elements is of course our service. We'd like to think of it as modern, professional but also relaxed in style. Even small details set the tone here, such as our uniforms which take their inspiration from the bold and ambitious Manchester House restaurant. We want you to feel perfectly at home in your chalet—our team are there when you need them, but not when you don't—and we try not to do things for the sake of it... tricks aren't required to make our holidays special.

We would say that simple quality is the goal we strive for, but as with all things simple, it's the detail that counts. The refinement of this detail year on year is the reason our food and drinks experiences are

considered the best in the industry! World-class properties, curated dining experiences, exceptional levels of service with fine attention to detail and a personal touch throughout. Offering a five-star luxury hotel experience in a private mountain residence.

This is our story.

This is Mountain Luxury Redefined.

So would you like to join us?



The faces behind our story
(clockwise from top left)

- Chris Hamblin, Managing Director
- Sarah Hamblin, Sales & Marketing Director
- Lucy Ford, Travel Experience Manager
- Paul Farley, Sales Manager
- Alex Spooner, Operations Manager

